

BF Series

Single Bag Housings: #1, #2, #3 and #4 sizes



- Designed for industrial and commercial filter applications
- Heavy duty construction for maximum durability
- 1/8" perforated stainless steel basket (optional perforations and mesh sizes available)
- #1 and #2 Size Housings:
 - Available in 316L Stainless Steel, 304L Stainless Steel or Carbon Steel construction for a wide range of chemical compatibility
 - Clamp or Swing Bolt closures
 - Stainless steel compression spring provides positive bag sealing
 - Adjustable stainless steel leg assembly
 - 1/4" FNPT gauge ports and 1/2" FNPT drain port
- #3 and #4 Size Housings:
 - 316 Stainless Steel construction
 - Clamp closure for easy bag change outs
 - Optional compression spring and adjustable mounting legs

Applications

Water	Chemicals
Food & Beverage	Electronics
Oil	Inks / Paints / Coatings
Coolants	Pulp & Paper

Specifications & Operating Parameters

Maximum Operating Pressure

150 psig (10.3 bar) @ 300°F (149°C)

Connections

Inlet /Outlet:

2" FNPT (#1 and #2 Sizes)

3/4", 1" and 1 1/2" FNPT (#3 and #4 Sizes)

Optional: RF Flanges or Sanitary Ferrules

Drain Port: 1/2" FNPT (#1 and #2 Sizes)

Gauge Ports: 1/4" FNPT - clean and dirty sides (#1 and #2 sizes)

Vent Port: 1/4" NPT Plug

Gaskets

Buna N

Optional: EPR, Silicone, Teflon Encapsulated Silicone, Viton

Baskets

1/8" perforated stainless steel

Options: various perforation and mesh sizes

Materials of Construction

Head / Shell:

#1 and #2 Sizes

316L Stainless Steel, 304L Stainless Steel, Carbon Steel

#3 and #4 Sizes

316L Stainless Steel

Eye Nuts: Zinc plated steel

Mounting Legs: 304L Stainless Steel

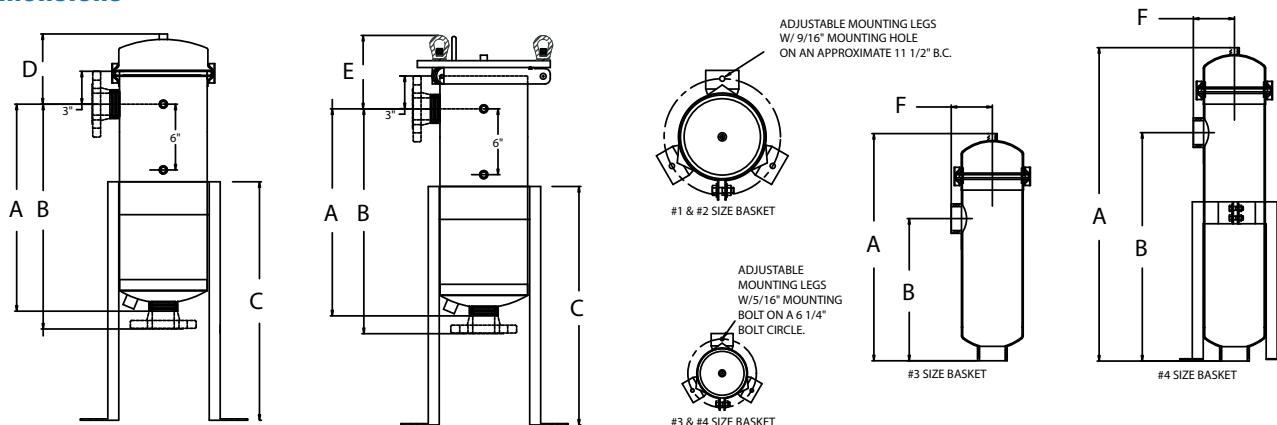
Options

- Side Inlet / Side Outlet (#1 and #2 sizes)
 - 134 epoxy coating for seawater and corrosive applications
- See ordering guide for complete selection of options

MODEL AND BAG SIZE	CLOSURE	MAX FLOW RATE* GPM (LPM)	DRAIN SIZE	DIMENSIONS					
				A	B	C	D	E	F
BFS-1 / BFC-1	Clamp or Swing Bolt	70 (265)	1/2"	18 7/8" (47.9 cm)	20 1/2" (52.1 cm)	21 3/4" (55.2 cm)	3" (7.6 cm)	6 11/16" (17.0 cm)	3" (7.6 cm)
BFS-2 / BFC-2	Clamp or Swing Bolt	150 (567)	1/2"	34 7/8" (88.6 cm)	22 3/4" (92.7 cm)	21 3/4" (55.2 cm)	3" (7.6 cm)	6 11/16" (17.0 cm)	3" (7.6 cm)
BFS-3	Clamp	25 (95)		16 9/16" (42.1 cm)	10 3/8" (26.4 cm)				
BFS-4	Clamp	40 (151)		22 7/8" (58.1 cm)	16 11/16" (42.4 cm)				

*Flow rates are guidelines only. Actual flow rates are based upon fluid, viscosity, bag type, micron ratings and other factors

Dimensions



Ordering Guide (Example: BFS-2SB-2-316-B)

BFS - 2 SB - 2 - 316 - B						
MODEL	BAG SIZE	CLOSURE	PIPE SIZE	MATERIAL	CONNECTION ORIENTATION	GASKET
#1 and #2 Sizes						
BFS = Stainless Steel BFC = Carbon Steel	1 2	C = Clamp SB = Swing Bolt	2 = 2" FNPT (standard) 2F = 2" RF Flange 3 = 3" FNPT 3F = 3" RF Flange 2TC = 2" Sanitary Ferrules	304 = 304 SS 316 = 316 SS 134 = 134 Coating over 304 SS*	Blank = Side In / Bottom Out 2 = Side In / Side Out	B = Buna N (Standard) E = EPDM S = Silicone V = Viton
#3 and #4 Sizes						
BFS = Stainless Steel	3 4	C = Clamp	75 = 3/4" FNPT 1 = 1" RF Flange 1.5 = 1 1/2" FNPT (standard)	316 = 316 SS	Blank = Side In / Bottom Out 2 = Side In / Side Out (Hold Down Spring Recommended)	B = Buna N (Standard) E = EPDM S = Silicone V = Viton

* Note: 134 Coating must have swing bolt closure and flanged connections.

Customization

Housings may be customized to meet your precise requirements. Contact Shelco's technical support staff or your distributor for more information.



Shelco Filters

100 Bradley Street

Middletown, CT 06457 USA

Tel: 800-543-5843 / Fax: 860-854-6120 / E-mail: info@shelco.com

MicroSentry™, MicroVantage™, Shelco Filters® and the Shelco logo are registered trademarks of the Tinny Corporation. Shelco Filters is a division of the Tinny Corporation.

BFS Series

Multi-Bag Housings – Two through Six Round



- Designed for high flow industrial and commercial filter applications
- 304L or 316L Stainless Steel Construction for maximum durability
- 2BFS housings with Clamp Closure
 - Recognized market leader offering exceptional value
 - Clamp closure offers quick and easy bag change-outs
 - 150 PSI pressure rating up to 250°F
 - 3" Flanged Connections
- 2BFS through 6BFS with Swing Bolt Closure
 - Heavy Duty Swing Bolt Closure and Davit Assembly are ideal for larger flow applications
 - Low profile for easy bag change-outs
 - 150 PSI pressure rating up to 300°F
 - Eye nuts and davit handle are zinc plated to prevent gauling
- Optional 134 epoxy coating for seawater or corrosive applications

Applications

Water	Chemicals
Food & Beverage	Electronics
Oil	Inks / Paints / Coatings
Coolants	Pulp & Paper

Specifications & Operating Parameters

Maximum Operating Pressure

150 psig (10.3 bar) @ 250°F (121°C) – Clamp closure
150 psig (10.3 bar) @ 300°F (149°C) – Swing bolt closure

Connections

Inlet /Outlet:

- 3" RF Flanges (2BFS)
- 4" RF Flanges (3BFS, 4BFS)
- 6" RF Flanges (5BFS and 6BFS)

Optional: RF Flanges or Sanitary Ferrules

Drain Port:

- 1/2" FNPT (2BFS-2C)
- 3/4" FNPT (2BFS-2SB - 6BFS-2SB)

Vent Port: 1/2" FNPT

Gauge Ports: 1/4" FNPT

Materials of Construction

Head / Shell: 304L or 316L Stainless Steel
Eye Nuts and Davit Handle: Zinc Plated Steel
Mounting Legs: 304L Stainless Steel

Gaskets

Buna N

Optional: EPR, Silicone, Teflon Encapsulated Silicone, Viton

Baskets

1/8" perforated Stainless Steel

Optional: Various perforation and mesh sizes

Finish

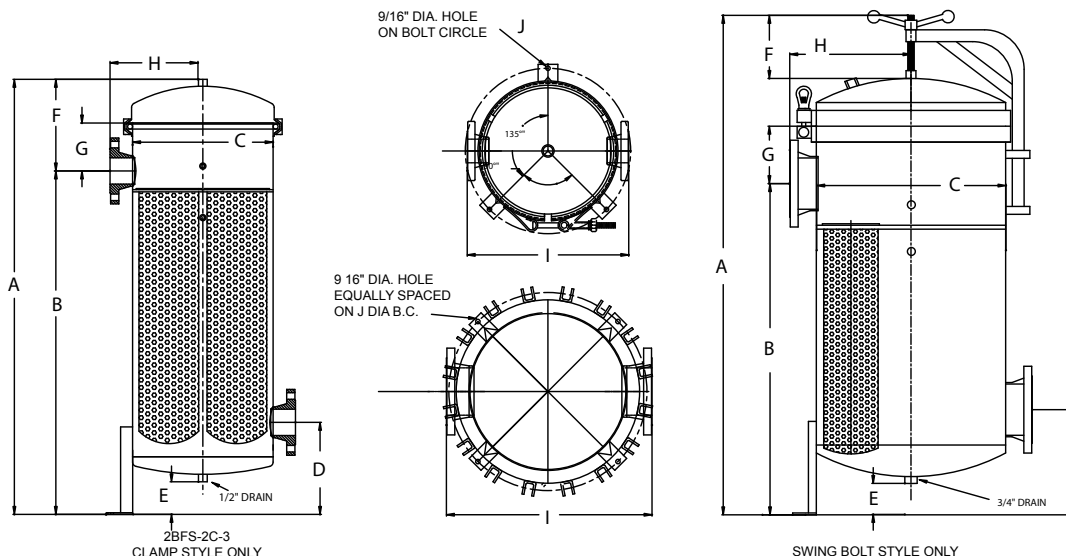
Poly-coat on exterior surfaces

Optional: 134 coating or electro-polish

MODEL	CLOSURE	FLOW RATE* GPM (LPM)	DIMENSIONS									
			A	B	C	D	E	F	G	H	I	J
2BFS-2C	Clamp	350 (1325)	49 9/16" (125.9)	39 1/8" (99.4)	16" (40.6)	10 1/2" (26.7)	4 1/8" (10.5)	11 5/8" (29.5)	13 5/8" (34.6)	10 9/16" (26.8)	20 1/2" (52.1)	20 15/16" (53.2)
2BFS-2SB	Swing Bolt	350 (1325)	49 9/16" (125.9)	39 1/8" (99.4)	16" (40.6)	10 1/2" (26.7)	3 11/16" (9.4)	10" (25.4)	6 7/8" (17.5)	10 9/16" (26.8)	20 1/2" (52.1)	20 15/16" (53.2)
3BFS-2SB	Swing Bolt	525 (1987)	52 7/8" (134.3)	41 1/16" (104.3)	20" (50.8)	10 3/4" (27.2)	3 1/4" (8.3)	10" (25.4)	6 1/4" (15.9)	12 5/16" (31.3)	22 5/8" (57.5)	25" (63.5)
4BFS-2SB	Swing Bolt	700 (2650)	61 1/4" (155.6)	40 1/2" (102.9)	20" (50.8)	11 1/4" (28.6)	3 1/4" (8.3)	10" (25.4)	8" (20.3)	12 7/8" (32.7)	26 1/16" (66.2)	25" (63.5)
5BFS-2SB	Swing Bolt	700 (3312)	63 1/2" (161.3)	42" (106.7)	24" (61.0)	13 3/8" (34.0)	4" (10.2)	10" (25.4)	7 1/4" (18.4)	15 3/8" (39.0)	30" (76.2)	29" (73.7)
6BFS-2SB	Swing Bolt	1050 (3975)	63 1/2" (161.3)	42" (106.7)	24" (61.0)	13 3/8" (34.0)	4" (10.2)	10" (25.4)	7 1/4" (18.4)	15 3/8" (39.0)	30" (76.2)	29" (73.7)

* Flow rates are for guide lines only. Actual flow rates are based upon fluid viscosity, bag type, micron rating and other factors.

Dimensions



Ordering Guide (Example: 2BFS-2SB-3-316B)

2BFS	2	SB	3	316	B
MODEL	BAG SIZE	CLOSURE STYLE	FLANGE**	MATERIAL	GASKET
2BFS 3BFS 4BFS 5BFS 6BFS	2	C = Clamp* SB = Swing Bolt	3 = 3" 4 = 4" 6 = 6"	304 = 304L SS 316 = 316L SS 134 = 134 Coating over 304L SS+	B = Buna N (Standard) E = EPDM S = Silicone V = Viton T = Teflon Encapsulated Silicone

* Clamp Closure only available in for 2BFS-2C housing

+ 134 Coating must have swing bolt closure and flanged connections

** Standard flange sizes are 3" for 2BFS, 4" for 3BFS and 4BFS, 6" for 5BFS and 6BFS

Customization

Housings may be customized to meet your precise requirements. Contact Shelco's technical support staff or your distributor for more information.



Shelco Filters

100 Bradley Street

Middletown, CT 06457 USA

Tel: 800-543-5843 / Fax: 860-854-6120 / E-mail: info@shelco.com

MicroSentry™, MicroVantage™, Shelco Filters® and the Shelco logo are registered trademarks of the Tinny Corporation. Shelco Filters is a division of the Tinny Corporation.

MicroSentry™ HTF Series

Filter Bags



- Wide variety of styles and materials for most industrial applications
- Standard #1, #2, #3 and #4 size bags to fit most major manufacturers' housings
- Available in 1 to 1500 microns retention ratings
- High quality felt media provides highest particle retention and largest solids-loading capacity
- Monofilament mesh media offers precise pore sizes and are suitable for reuse applications
- Bag seals available with steel, stainless steel or plastic rings or plastic flanges with integral handles for positive sealing
- Media options include polypropylene, polyester, Nylon, Nomex for high temperatures and Teflon for widest range of chemical compatibility
- Glazed media finish reduces media migration
- Heavy duty fiber handles available for easy removal

Applications

Paint / Inks	Coatings
Lubricants	Resins
Beverages	Parts Washers
Process Water	Pre-filtration
Water & Wastewater	Chemicals

Specifications & Operating Parameters

Pore Sizes 1, 3, 5, 10, 2, 50, 75, 100, 150, 200, 250, 300, 400, 600, 800, 1200, 1500 microns

Materials of Construction

Bags: Polypropylene felt
Polypropylene melt blown
Polypropylene Monofilament
Polyester felt
Polyester Multifilament
Nylon Monofilament
Oil Absorbent (polypropylene)
Rings: Polypropylene
Stainless Steel
Steel

Flanges: Polypropylene

Maximum Temperature

Polypropylene	180°F (82°C)
Polyester	300°F (149°C)
Nylon	250°F (121°C)

Recommended Change-out Differential Pressure

20 psid (1.4 bar)

Bag Sizes

#1	7" Diameter x 16.5" Length
#2	7" Diameter x 32" Length
#3	4" Diameter x 8" Length
#4	4" Diameter x 14" Length

Bag Construction

Felt Bags:

Filtration felt is a low cost, disposable media with particle retention from 1 to 200 microns. It provides moderate depth filtration and high solids loading capacity. Felt Bags are available in polyester and Polypropylene. The felts are glazed to minimize media migration.

High Efficiency Melt Blown Polypropylene Bags:

High efficiency polypropylene bags are constructed of multi-layer media including melt-blown polypropylene media for high particle retention efficiency for more critical applications. The filter bags are rated for 90%, 95% and 99% retention efficiencies.

Monofilament Mesh Bags:

Monofilament mesh is an extremely strong material with precise weaving to ensure consistent pore sizes. It is reusable in many applications. Nylon, polyester and polypropylene media is available with micron ratings from 1-200 microns.

Multifilament Mesh Bags:

Multifilament mesh is a low cost media with micron ratings from 100 to 1500 microns. It is used in applications where the extra strength of a monofilament is not needed. Multifilament bags are available in Polyester only.

Material Selection Guide

FILTER MEDIUM	POLYPROPYLENE	POLYESTER	NYLON
Compatible with			
Potable liquids, water	4	3	1
Organic Solvents	3	4	4
Oils	2	3	4
Organic Acids	4	3	2
Alkalies	4	0	4
Oxidizing Acids	1	3	2
Strong Inorganic Acids	4	2	0
Dilute Inorganic Acids	4	3	1

0 = Not Recommended, 1 = Poor, 2 = Fair, 3 = Good, 4 = Excellent

Ordering Guide (Example: BPG-5-2PF)

B	PG	5	-	2	PF	
MODEL	MEDIA	MICRON		BAG SIZE	RING	OPTION
B	PG = Polypropylene Glazed HPG = High Efficiency Polypropylene* PMO = Polypropylene Monofilament EG = Polyester Glazed EMO = Polyester Monofilament EMU = Polyester Multifilament+ NMO = Nylon Monofilament OA = Oil Absorbent	1 150 3 200 5 250 10 300 25 400 50 600 75 800 100 1000		1 2 3 4	S = Steel SS = Stainless Steel P = Polypropylene PF = Polypropylene Flange DS = Draw String	Blank = None H = Handle

* For HPG bags, add -A for 99% efficiency, -B for 95% efficiency and -C for 90% efficiency

+ Multifilament bags are available in 100 micron and above.

Filter Housings

Shelco manufactures a full line of filter housings. From our rugged single cartridge housings to our heavy duty multi-cartridge housings and bag filter housings, Shelco is the perfect choice for your filtration solutions.



Shelco Filters

100 Bradley Street

Middletown, CT 06457 USA

Tel: 800-543-5843 / Fax: 860-854-6120 / E-mail: info@shelco.com

MicroSentry™, MicroVantage™, Shelco Filters® and the Shelco logo are registered trademarks of the Tinny Corporation. Shelco Filters is a division of the Tinny Corporation.